

Helpman LFX 256-7

Specifications

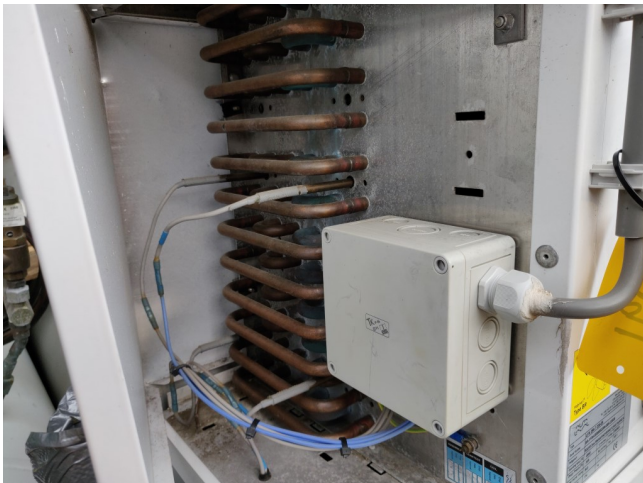
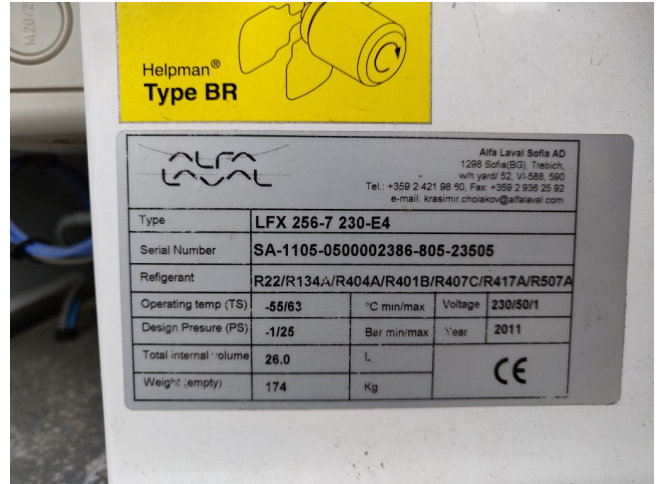
Marca	Helpman
Tipo	LFX 256-7
Capacidad kW	19.9
Refrigerante	Freon
Número de aficionados	5
Fan del Espacio in mm	7
Descongelación	Electric
m ³ /h	14.000
Tamaños	3420x540 mm (LxH)
Comentarios	19.9 at DT1=8K // YOB 2011
Volume	26 dm ³
Peso	174
Stock	1



Description

Used Helpman LFX 256-7

Used helpman LFX 256-7 · Size: 3420x540 mm (LxH) · Weight: 174Kg · Fin space: 7mm · m³/h: 14.000 · Fans: 5 · Hertz fans: 50Hz · refrigerant R404A electric defrost · **All components of this used evaporator will be tested on good working, leak free condition (electro engines), coils, bearings) Choosing HOSBV means buying with warranty. We perform a industrial cleaning and rust spots will be covered. Also, we can arrange your shipment.



Agricultural storage coolers THOR-F, TYR-F, LFX

Capacities R-404A

Cooler model	Capacities kW				Dimensions			Fans				
	Frosted t _a -3°C DT _a -4K	Dry cond. t _a -8°C DT _a -4K	Air flow m ³ /h	Coil surface m ²	Int. vol. dm ³	Weight kg	Length A mm	Height B mm	Cap. kW	Nr	Air throw (m)	Sound press. (dB(A))
LFX 136-7	6.8	5.9	5100	30.3	10	54	1600	450	90	3	12	54
LFX 146-7	9.6	8.3	6800	40.4	13	70	2040	450	90	4	12	56
LFX 156-7	11.8	10.1	8500	52.6	16	86	2560	450	90	5	12	57
LFX 166-7	14.3	12.4	10200	62.4	19	103	2900	450	90	6	12	58
LFX 246-7	14.7	12.8	11200	63.1	23	135	2660	540	90	4	15	59
LFX 256-7	19.8	17.3	14000	84.1	26	174	3420	540	90	5	15	60
LFX 266-7	22.2	19.3	16800	90.4	29	193	3640	540	90	6	15	61
LFX 276-7	25.9	22.5	19600	105.6	34	219	4190	540	90	7	15	61
LFX 286-7	28.6	24.9	22400	120.7	39	250	4740	540	90	8	15	62
THOR-F												
THOR-F 136-7	20.7	19.0	12840	101.4	32	159	2920	580	250	3	20	62
THOR-F 146-7	27.1	23.5	17130	135.2	42	203	3720	580	250	4	20	63
THOR-F 156-7	34.4	30.0	21410	169.0	53	246	4520	580	250	5	20	64
THOR-F 166-7	41.3	35.9	25690	202.8	63	290	5320	580	250	6	20	65
THOR-F 176-7	47.8	41.4	29970	236.6	74	333	6120	580	250	7	20	66
THOR-F 236-7	24.8	21.6	15410	121.7	42	176	2920	680	250	3	24	65
THOR-F 246-7	32.5	29.2	20550	162.2	53	225	3720	680	250	4	24	66
THOR-F 256-7	41.3	35.9	25690	202.8	65	274	4520	680	250	5	24	67
THOR-F 266-7	49.6	43.1	30830	243.4	76	323	5320	680	250	6	24	68
THOR-F 276-7	57.1	49.7	35970	283.9	88	372	6120	680	250	7	24	69
TYR-F												
TYR-F 136-7	18.5	16.0	12840	101.4	32	159	2920	580	250	3	20	62
TYR-F 146-7	24.6	21.4	17130	135.2	42	203	3720	580	250	4	20	63
TYR-F 156-7	30.8	26.7	21410	169.0	53	246	4520	580	250	5	20	64
TYR-F 166-7	36.9	32.1	25690	202.8	63	290	5320	580	250	6	20	65
TYR-F 176-7	43.1	37.4	29970	236.6	74	333	6120	580	250	7	20	66